

# EM45 RFID Enterprise Mobile Accessories Guide

The Power of Zebra in Your Pocket.

Revised Feb 2025





<b>I.</b>	<b>Accessories that PROTECT devices</b>	
<b>1</b>	<b>Protective case, screen protector, belt, and shoulder strap</b>	
1.1	<a href="#">Protective case, screen protector, belt, and shoulder strap</a>	3
<b>II.</b>	<b>Accessories that ENABLE productivity solutions</b>	
<b>2</b>	<b>Headset</b>	
2.1	<a href="#">Wired headset for Workcloud Sync</a>	4
2.2	<a href="#">Wireless headsets for voice-directed picking</a>	5
<b>III.</b>	<b>Accessories that POWER devices</b>	
<b>3</b>	<a href="#">Cable, and Power Supply Adapters</a>	6
<b>IV.</b>	<b>Workstation Connect Cradle</b>	
<b>4</b>	<a href="#">Workstation Connect Cradle</a>	7
4.1	<a href="#">Country-specific AC line cords</a>	8
<b>V.</b>	<b>Third Party Accessories for EM45 RFID</b>	
<b>5</b>	<a href="#">RAM 3<sup>rd</sup> Party Inteliskin and Vehicle Dock</a>	11
<b>5.1</b>	<a href="#">RAM 3<sup>rd</sup> Party Charging Cradles</a>	12
<b>5.2</b>	<a href="#">RAM 3<sup>rd</sup> Party Mounts and Accessories</a>	13
<b>5.3</b>	<a href="#">Mobilis 3<sup>rd</sup> Party Boots, Straps</a>	14

## Rugged boot, and screen protector



### Rugged boot

SKU# [SG-EM45EXO1-01](#)

Protective case for EM45 RFID.

- Boot increases drop spec of device from 1.2 m (4 ft.) to 1.5 m (5 ft.)

*\* Please note this accessory is a consumable and may require replacement during the device's lifespan.*

### Screen protector

SKU# [SG-EM45-SCRNPT1-1](#)

One tempered glass screen protector for EM45 RFID.

- Includes: Alcohol wipes, cleaning cloth, and instructions needed for screen protector installation.
- Also available as a [10-pack](#) — 10 screen protectors — [SKU# SG-EM45-SCRNPT-10](#)

*\* Please note this accessory is a consumable and may require replacement during the device's lifespan.*

### Shoulder strap

SKU# [58-40000-007R](#)

Universal shoulder strap.

- Extends from 22 to 55 inches and is 1.5 inches wide.
- Compatible with Mobilis Holster [3PTY-MOB-031002](#) (sold separately).

*\* Please note this accessory is a consumable and may require replacement during the device's lifespan.*

### Belt for holster

SKU# [11-08062-02R](#)

Universal belt.

- Extends 48 inches and is 2 inches wide
- Compatible with Mobilis Holster [3PTY-MOB-031002](#) (sold separately).

*\* Please note this accessory is a consumable and may require replacement during the device's lifespan.*

[Back to Table of Contents](#)

# Accessories that enable productivity solutions



## Headsets

### Close gaps, Open possibilities with Workcloud Sync

Usher in a new era of transformation—one led by your frontline and powered by Zebra Workcloud Sync. One where communication and information flows freely and gaps between teams, workflows and data are closed.

With Workcloud Sync, hindered workers become effective problem solvers, contributing their best. Critical workflows are streamlined in one place, on one device, equipping workers with the information they need, right at their fingertips.

Only Zebra offers the most complete lineup of software and rugged hardware with the scalability, support and service needed to make the greatest impact where it counts—on the frontline.

[Learn more about you can elevate your frontline workers with Zebra Workcloud Sync.](#)



### Wired headsets for Workcloud Sync

SKU# HDST-USBC-PTT1-01

PTT headset with USB-C connector; one-piece solution.

- For Push-To-Talk (PTT) applications with volume up/volume down/PTT buttons. Compatible with PTT Express/PTT Pro.
- Rotating earpiece allows for right or left ear configuration. Mono headset with microphone.
- Includes clip for attaching PTT button to clothing.

## Headsets

### Rugged Bluetooth and corded HD voice headsets for the most demanding industrial environments

When it comes to enabling speech-driven applications and voice communications in warehouses, manufacturing plants and outdoor yards, you need a headset that is specially designed for the job. The HS3100 Bluetooth and HS2100 corded headsets are loaded with features that offer everything you need in an industrial headset.



#### Wireless headsets for voice-directed picking

##### HS3100 rugged Bluetooth headset

Bluetooth headset for voice-directed picking applications.

- Noise cancellation tuned for Voice-Directed Picking applications.
- Swap batteries on the fly — without losing the Bluetooth connection.
- Split-second tap-to-pair simplicity using NFC. 15 hours of battery power.

SKU#	Description
<a href="#">HS3100-OTH</a>	HS3100 Bluetooth Headset Over-The-Head Headband includes HS3100 Boom Module and HSX100 OTH Headband Module
<a href="#">HS3100-BTN-L</a>	HS3100 Bluetooth Headset (Behind-the-neck headband left)
<a href="#">HS3100-OTH-SB</a>	HS3100 Bluetooth Headset (Over-the-head headband) includes HS3100 Shortened Boom Module and HSX100 OTH headband module
<a href="#">HS3100-BTN-LSB</a>	HS3100 Bluetooth Headset (Behind-the-neck headband left) includes HS3100 Shortened Boom Module and HSX100 BTN headband module
<a href="#">HS3100-SBOOM-01</a>	HS3100 Shortened Boom Module (includes microphone boom, battery and windscreen)



# Accessories that power devices



## Cable and Power Supply Adaptor

SKU#	Description	Note
<a href="#">CBL-EC5X-USBC3A-01</a>	USB-C to USB-C communications and charging cable, 1M long; support 3.0 superspeed and fast charge.	<b>Sold separately.</b> To be used with <a href="#">PWR-WUA5V45W1XX</a> (replace “XX” in SKU as follows to get the right plug style based on region.) <ul style="list-style-type: none"> <li>• <a href="#">US</a> (United States) • <a href="#">GB</a> (United Kingdom) • <a href="#">EU</a> (European Union) • <a href="#">AU</a> (Australia) • <a href="#">CN</a> (China) • <a href="#">IN</a> (India) • <a href="#">KR</a> (Korea)</li> </ul>
<a href="#">PWR-WUA5V45W1US</a>	USB type C power supply adaptor with United States plug. USB PD 3.1 power supply with an input of 100-240VAC and a self-adjusting output ranging from 5V/3A to 20V/2.25A.	<b>Sold separately.</b> Used with USB-C Cable ( <a href="#">CBL-EM45-USBC3A-01</a> ) to charge device.
<a href="#">PWR-WUA5V45W1EU</a>	USB type C power supply adaptor with European Union plug. USB PD 3.1 power supply with an input of 100-240VAC and a self-adjusting output ranging from 5V/3A to 20V/2.25A.	<b>Sold separately.</b> Used with USB-C Cable ( <a href="#">CBL-EM45-USBC3A-01</a> ) to charge device.
<a href="#">PWR-WUA5V45W1GB</a>	USB type C power supply adaptor with United Kingdom plug. USB PD 3.1 power supply with an input of 100-240VAC and a self-adjusting output ranging from 5V/3A to 20V/2.25A.	<b>Sold separately.</b> Used with USB-C Cable ( <a href="#">CBL-EM45-USBC3A-01</a> ) to charge device.
<a href="#">PWR-WUA5V45W1AU</a>	USB type C power supply adaptor with Australia plug. USB PD 3.1 power supply with an input of 100-240VAC and a self-adjusting output ranging from 5V/3A to 20V/2.25A.	<b>Sold separately.</b> Used with USB-C Cable ( <a href="#">CBL-EM45-USBC3A-01</a> ) to charge device.
<a href="#">PWR-WUA5V45W1CN</a>	USB type C power supply adaptor with China plug. USB PD 3.1 power supply with an input of 100-240VAC and a self-adjusting output ranging from 5V/3A to 20V/2.25A.	<b>Sold separately.</b> Used with USB-C Cable ( <a href="#">CBL-EM45-USBC3A-01</a> ) to charge device.
<a href="#">PWR-WUA5V45W1KR</a>	USB type C power supply adaptor with Korea plug. USB PD 3.1 power supply with an input of 100-240VAC and a self-adjusting output ranging from 5V/3A to 20V/2.25A.	<b>Sold separately.</b> Used with USB-C Cable ( <a href="#">CBL-EM45-USBC3A-01</a> ) to charge device.
<a href="#">PWR-WUA5V45W1IN</a>	USB type C power supply adaptor with India plug. USB PD 3.1 power supply with an input of 100-240VAC and a self-adjusting output ranging from 5V/3A to 20V/2.25A.	<b>Sold separately.</b> Used with USB-C Cable ( <a href="#">CBL-EM45-USBC3A-01</a> ) to charge device.



## EM45 RFID Connect Cradle

Introducing the new Workstation Connect Cradle for EM45 RFID. This accessory allows EM45 RFID to connect to multiple, purpose-built peripherals and enable Zebra Workstation Connect on an external monitor. The Connect Cradle offers connections for standard workstation setups (monitor, keyboard, mouse).



### Connect Cradle

SKU# CRD-EM4X-1SNWS-01

Workstation

- This connect cradle, allows users to use EM45 RFID device as a workstation or kiosk. Includes HDMI, Ethernet, USB-A (x4) ports, shims, and 3.5mm headset jack. Power supply, DC line cord and AC line cord are all sold separately.

### Power Supply & DC Line Cord

SKU# PWR-BGA12V50W0WW | SKU# CBL-DC-388A2-01

Power Supply | DC Line Cord

- Power Supply [PWR-BGA12V50W0WW](#) for workstation connect cradle: 100-240 VAC, 12VDC, 4.16A.
- DC Line Cord [CBL-DC-388A2-01](#) to be with used with the above power supply for Workstation connect cradle
- Country-specific AC line cord is required ([Listed here](#)).



## AC line cords

### Country-specific AC line cords: grounded, 3-prong

SKU#	Country / region	Note
<a href="#">23844-00-00R</a>	North America (United States, Canada, Mexico)	7.5 feet long Commonly used with chargers mounted in server racks
<a href="#">50-16000-678R</a>	North America (United States, Canada, Mexico)	3 feet long
<a href="#">50-16000-221R</a>	North America (United States, Canada, Mexico)	6 feet long
<a href="#">50-16000-727R</a>	Brazil	1.8 meters (6 feet) long
<a href="#">50-16000-680R</a>	Argentina	1.8 meters (6 feet) long
<a href="#">50-16000-217R</a>	American Samoa, Australia, New Guinea	1.8 meters (6 feet) long
<a href="#">50-16000-218R</a>	Japan	1.8 meters (6 feet) long
<a href="#">50-16000-219R</a>	Antigua, Bermuda, Burma, Channel Islands, Hong Kong, Iraq, Ireland, Malaysia, North Ireland, Scotland, Singapore, United Kingdom, Wales	1.8 meters (6 feet) long
<a href="#">50-16000-257R</a>	China	1.8 meters (6 feet) long
<a href="#">50-16000-220R</a>	Europe, Abu Dhabi, Bolivia, Dubai, Egypt, Iran, Korea, Russia, Vietnam	1.8 meters (6 feet) long
<a href="#">50-16000-671R</a>	Italy	1.8 meters (6 feet) long
<a href="#">50-16000-669R</a>	India, S. Africa, Africa	1.8 meters (6 feet) long





## Accessories that power devices



### Power supply, cables, and adaptors

#### Country-specific AC line cords: ungrounded, 2-prong

SKU#	Country / region	Note
<a href="#">50-16000-182R</a>	United States	Type A NEMA 1-15 plug
<a href="#">50-16000-255R</a>	Europe, Abu Dhabi, Bolivia, Dubai, Egypt, Iran, Korea, Russia, Vietnam.	Type C CEE7/16 plug
<a href="#">50-16000-670R</a>	Bermuda, Hong Kong, Iraq, Ireland, Malaysia, Singapore, United Kingdom.	

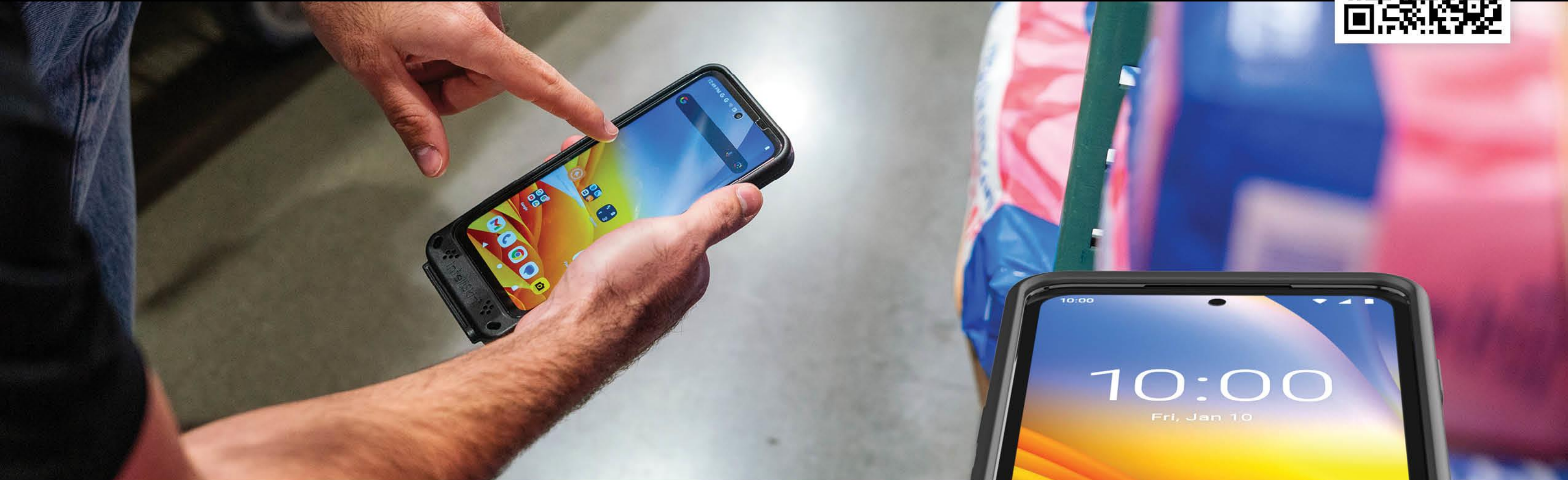


# Third Party Accessories for EM45 RFID

**Note:** Products sold that do not bear the Zebra brand name are serviced and supported exclusively by their manufacturers in accordance with terms and conditions packaged with the products. Zebra's Limited Warranty does not apply to products that are not Zebra branded, even if packaged or sold with Zebra products. Please contact the manufacturer directly for technical support and customer service.

[Back to Table of Contents](#)





## IntelliSkin® with GDS® Tech™ for Zebra EM45 Handheld Computer

Next generation durability, fast charging, and ease of use providing a remarkable boost in efficiency your workforce needs.



### 3PTY-RAM-GDS-SKIN-ZE37

IntelliSkin® for EM45



### Key Differentiator

Internal USB-C connector that protects the device ports and converts the connection point into flat, easy-to-clean pogo pad docking contacts.

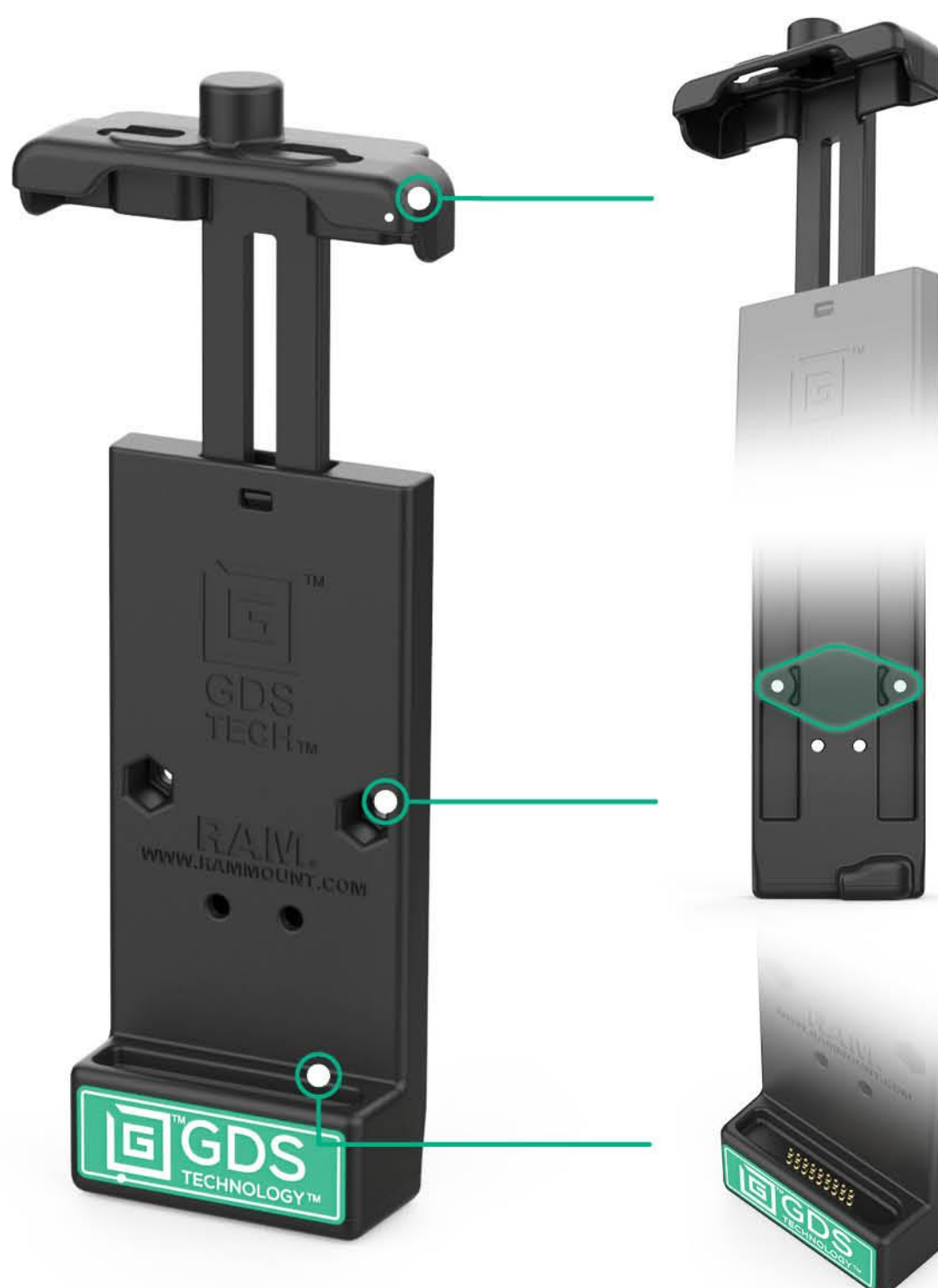
### Compatible Hardwire Chargers

#### 3PTY-RAM-GDS-CHARGE-V3C2U

GDS® 10-30V Power Delivery Hardwire Charger

#### 3PTY-RAM-GDS-CHARGEV3CH2U

GDS® 30-64V Power Delivery Hardwire Charger



### Docking

Sping-loaded top cup for easy one-handed docking and removal

### Mounting

2-Hole AMPS pattern for mounting a ball adapter

### Charging

Pogo pin docking contacts for charging

### 3PTY-RAM-GDS-DOCK-V3CPAU

GDS® Vehicle Dock for Phones with IntelliSkin®





# GDS® Charging Docks

## for Zebra EM45 Handheld Computer



### 3PTY-RAM-GDS-DOCK-D7U

GDS® Desktop Dock with Power Delivery - Small Tablets & Phones



### 3PTY-RAM-GDS-DOCK-6G16P

GDS® 6-Port Charging Dock for Tablets and Phones with IntelliSkin®



### 3PTY-RAMGDSDOCK6G16PRJ45

GDS® 6-Port Charging Dock with RJ45 Ports for Tablets and Phones with IntelliSkin®



Compatible with any Zebra Handheld wrapped in IntelliSkin®

### 3PTY-RAM-GDS-DOCK-6G15P

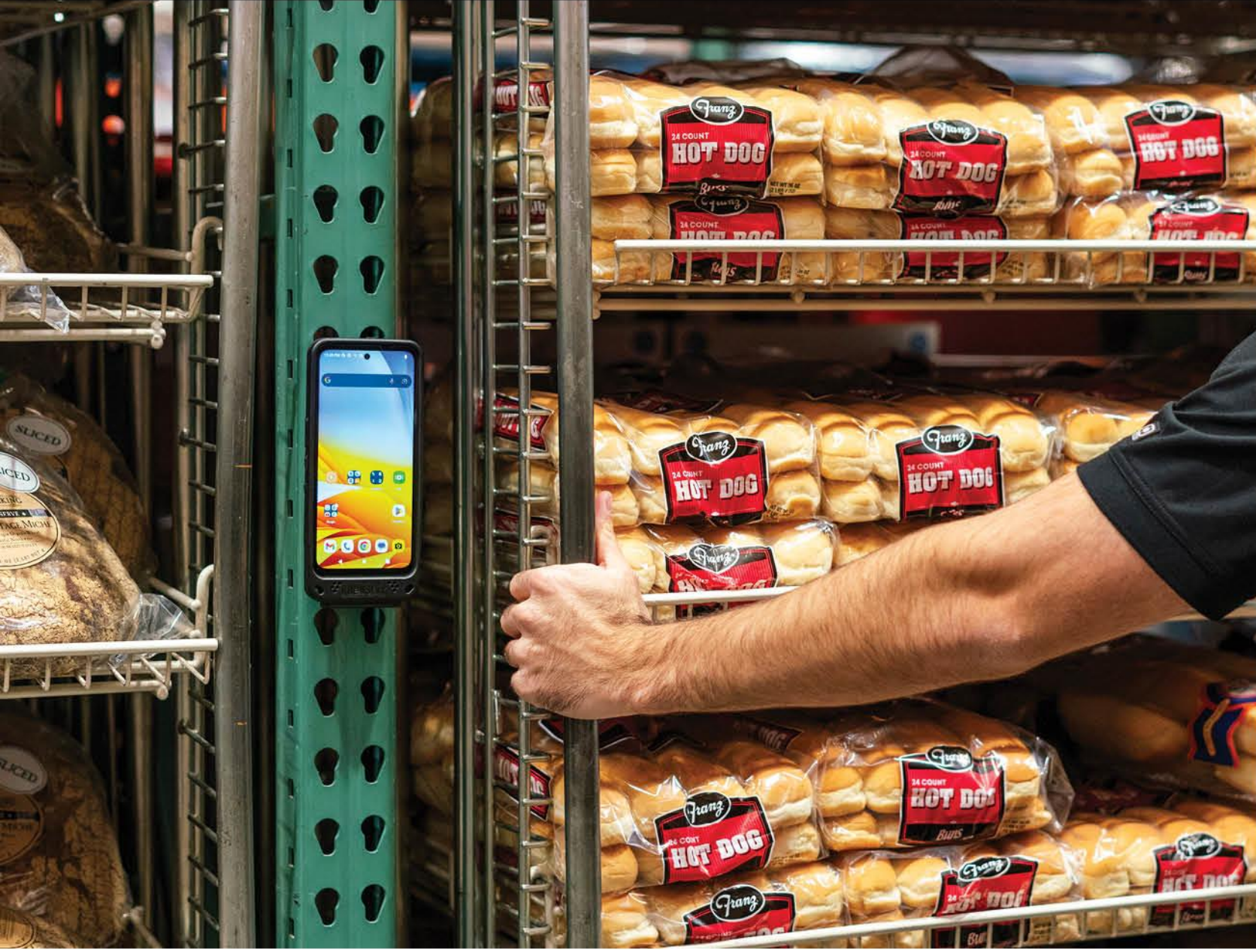
GDS® 6-Port Charging Dock for Zebra Handheld PCs with IntelliSkin®



### 3PTY-RAMGDSDOCK6G15PRJ45

GDS® 6-Port Charging Dock with RJ45 Ports for Zebra Handheld PCs with IntelliSkin®





## RAM® Accessories & Mounts for Zebra EM45 Handheld Computer



**3PTY-RAM-102U-B-247**  
RAM® Forklift Mount C-Size  
with Short Arm



**3PTY-RAM-GDS-SS1U**  
GDS® Shoulder Strap Accessory



# BLACK RUGGED BOOT FOR ZEBRA EM45 RFID

Increase the lifetime of your EM45 device by protecting it with the MOBILIS® rugged boot!

The EM45 Zebra is designed for intensive use in environments where drops and shocks are frequent. The MOBILIS® Protech case offers unbeatable protection.



Rugged boot for Zebra EM45 RFID  
**3PTY-MOB-065029**

**40X**  
MILITARY  
STANDARD

**x1000**  
DROPS  
1m50/5ft

ORIGINE  
**FRANCE**  
GARANTIE

AFNOR Cert. 107672



### AIRCELL SYSTEM

4 air pockets to absorb shocks.  
Up to **1000 drops** from 1.50m/5ft



### RESPONSIVE BUTTONS

High **tactile reactivity**



### HANDSTRAP READY

Compatible with MOBILIS® Hand Strap



### ANTIMICROBIAL PROTECTION

Sanitized® labeled technology:  
Eliminates **99%** of microbes in 24 hours



### ECO-DESIGN

Case made with **30%** recycled material & 100% recyclable



### ADVANCED RAISED EDGES

Design to protect the screen and camera lens **in the event of falls**





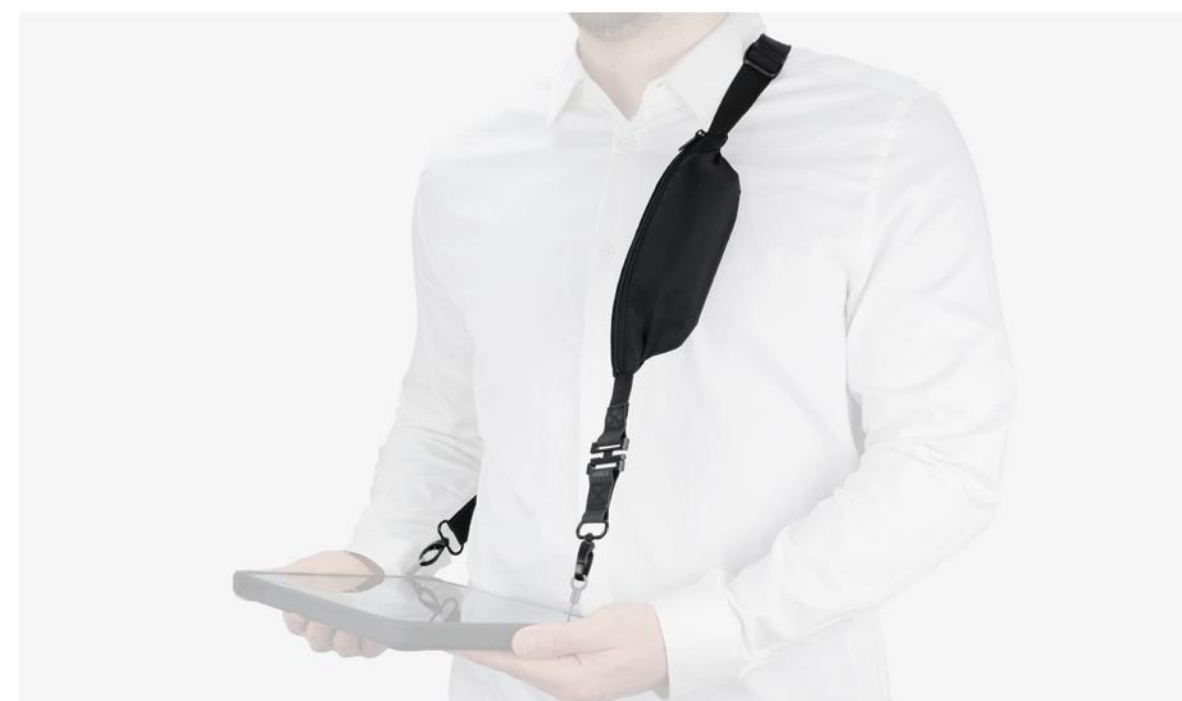
EXPLORE OUR  
ZEBRA PRODUCTS



## ADDITIONAL PRODUCTS



**HAND STRAP**  
3PTY-MOB-001367



**POCKET SHOULDER STRAP**  
3PTY-MOB-001092



**BASIC SHOULDER STRAP**  
2 ATTACHMENT POINTS  
3PTY-MOB-001093



**HOLSTER SIZE M**  
3PTY-MOB-031002

## BOOST YOUR BRAND VISIBILITY !



Customize your protective boots  
with your color and logo

**LEARN MORE, CONTACT US!**

**CONTACT :**

✉ [Imebrouki@mobiliscase.com](mailto:Imebrouki@mobiliscase.com)  
☎ +33 682 005 064  
🌐 [datacapture.mobiliscase.com](http://datacapture.mobiliscase.com)



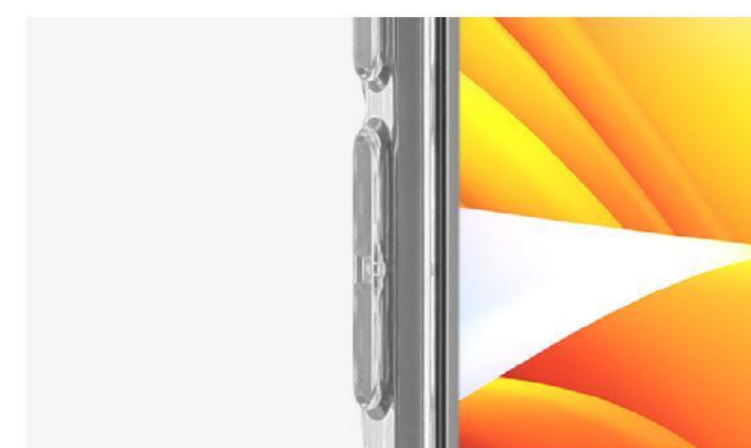
# CLEAR RUGGED BOOT FOR ZEBRA EM45 RFID

Increase the lifetime of your EM45 device by protecting it with the MOBILIS® rugged boot!

The EM45 Zebra is designed for intensive use in environments where drops and shocks are frequent. The MOBILIS® Protech case offers unbeatable protection.



**DROP SAFE CORNERS**  
4 air pockets to absorb shocks.  
Up to **500 drops** from **1.20m/4ft**



**RESPONSIVE BUTTONS**  
High **tactile reactivity**



**ACCESS TO ALL PORTS**  
Allows charging via USB-C

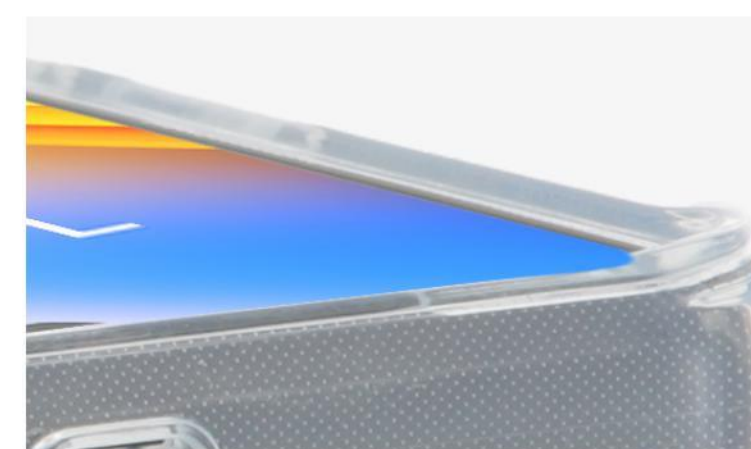
Origine rugged boot for Zebra EM45 RFID  
**3PTY-MOB-048057**



**ANTIMICROBIAL PROTECTION**  
Sanitized® labeled technology:  
Eliminates **99%** of microbes in **24 hours**



**ECO-DESIGN**  
Case made with **100% recycled material** & **100% recyclable**



**ADVANCED RAISED EDGES**  
Design to protect the screen and camera lens **in the event of falls**

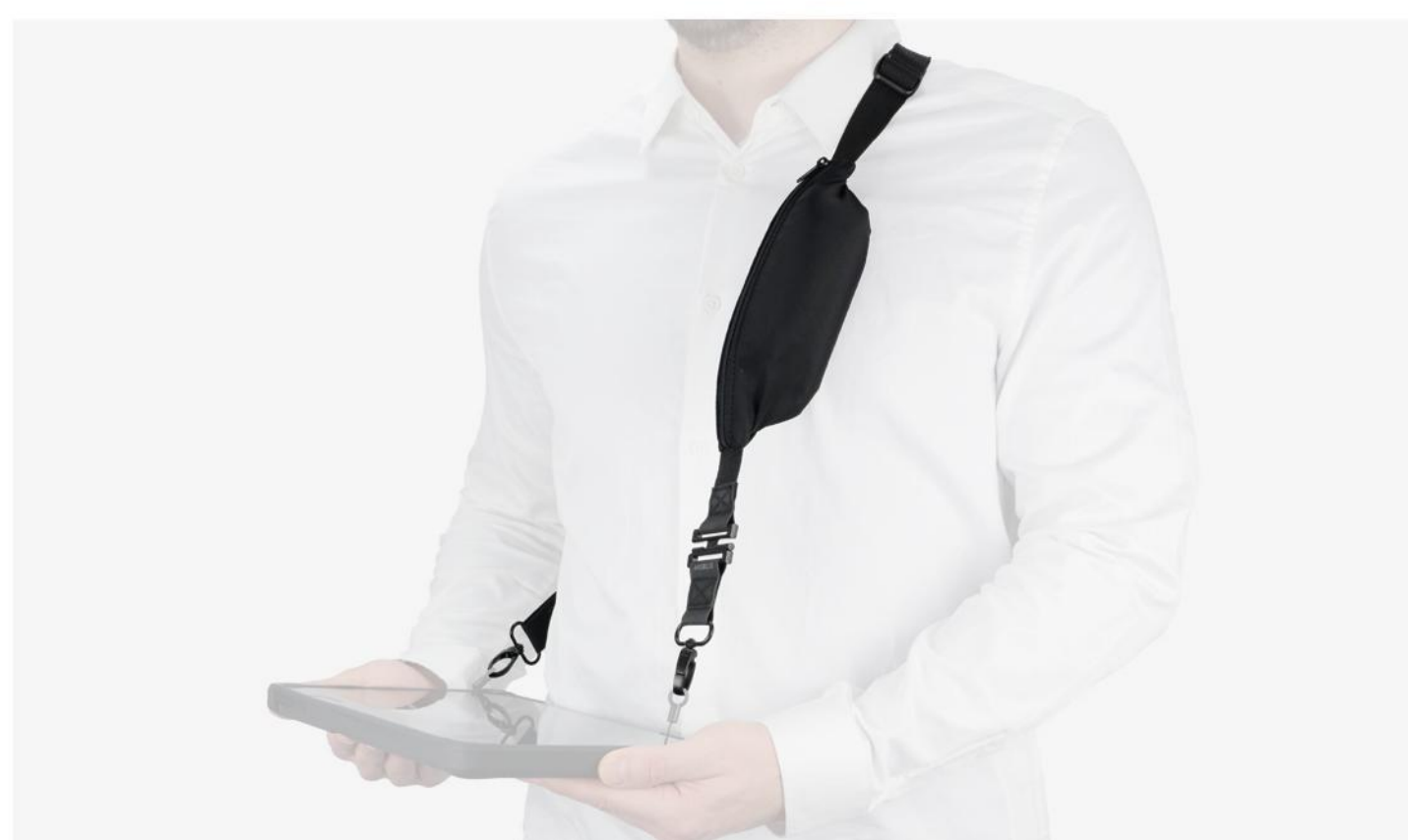




EXPLORE OUR  
ZEBRA PRODUCTS



## ADDITIONAL PRODUCTS



**POCKET SHOULDERSTRAP**  
3PTY-MOB-001092



**HOLSTER SIZE M**  
3PTY-MOB-031002

**CONTACT :**

✉ [Imebrouki@mobiliscase.com](mailto:Imebrouki@mobiliscase.com)  
☎ +33 682 005 064  
🌐 [datacapture.mobiliscase.com](http://datacapture.mobiliscase.com)